

Integration API

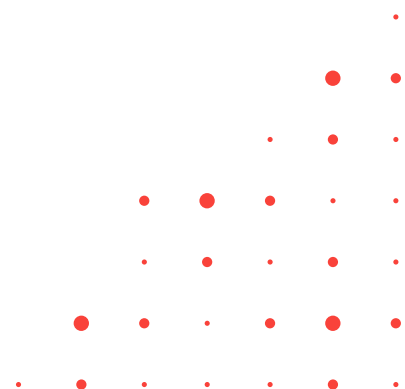
Introduction to L2S Integration API

09.05.2022 – Leif Horpestad



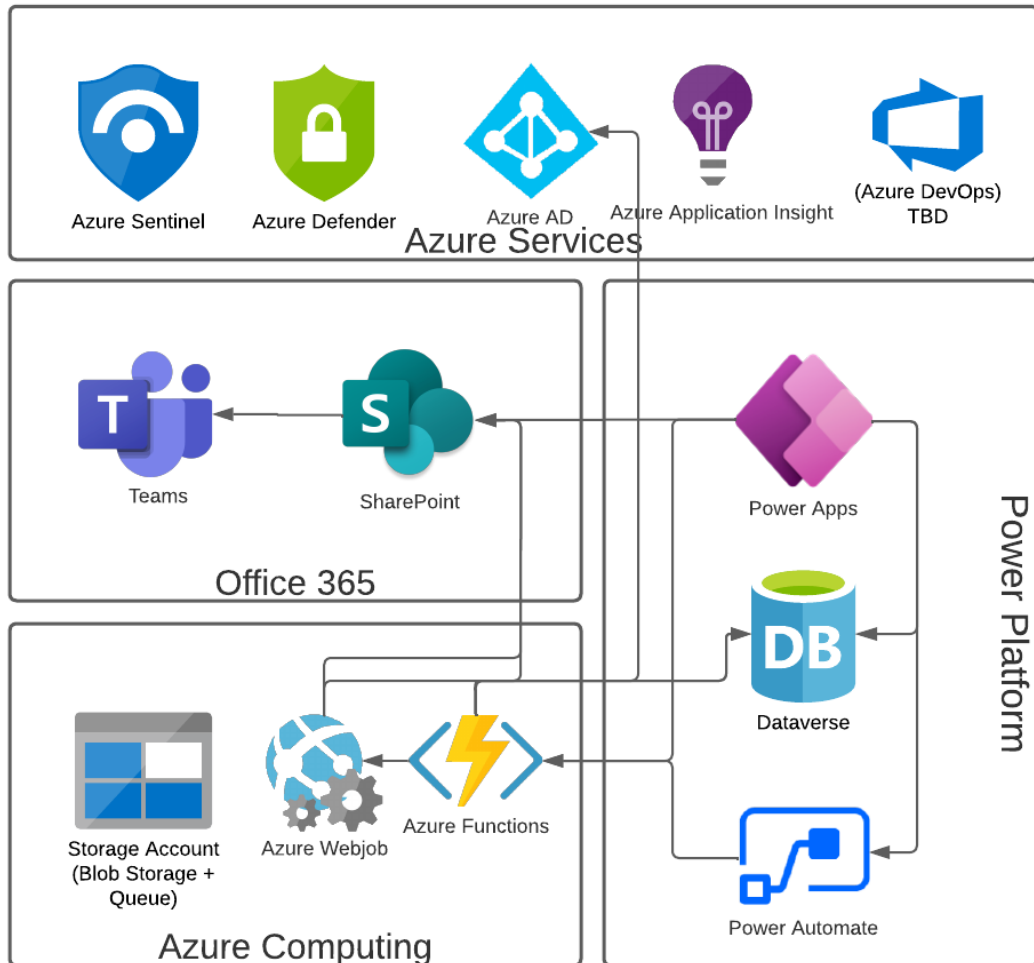
Agenda

- What is Future L2S?
 - O365 – Power Platform
- Security and permissions
 - Archiving
 - How are we protecting the content?
- Authentication
- General principal of L2S API
 - Throttling
 - Ticketing
- Next step
 - Technical details
 - User and credentials
- Questions

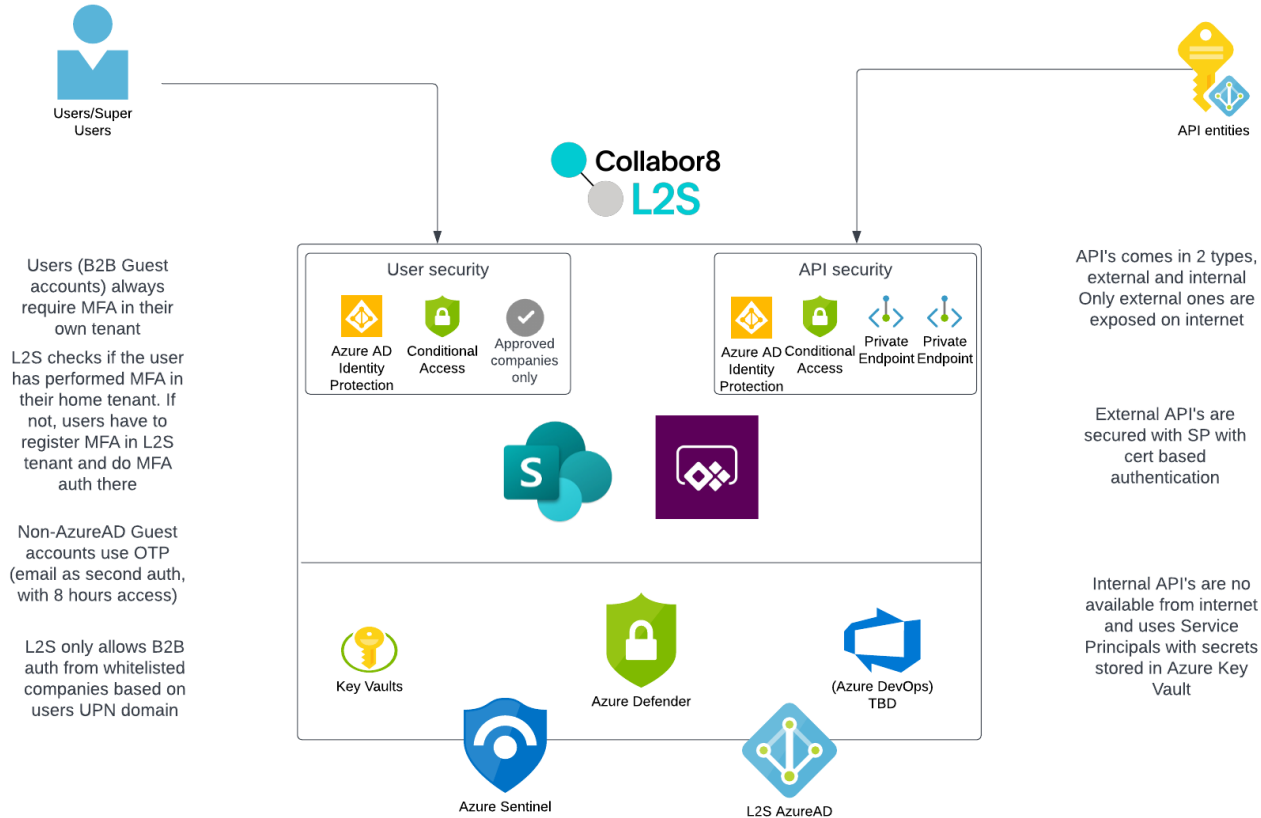


What is Future L2S?

- SharePoint & Teams
- Power Platform
- Dataverse
- Azure Resources and Services
- Azure AD Guest Accounts



What is Future L2S?



Users (B2B Guest accounts) always require MFA in their own tenant

L2S checks if the user has performed MFA in their home tenant. If not, users have to register MFA in L2S tenant and do MFA auth there

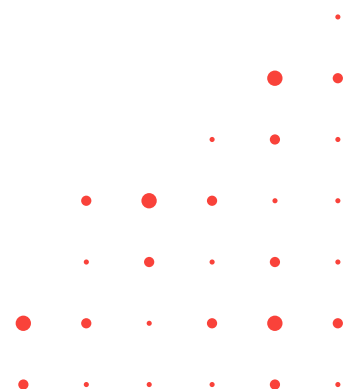
Non-AzureAD Guest accounts use OTP (email as second auth, with 8 hours access)

L2S only allows B2B auth from whitelisted companies based on users UPN domain

API's comes in 2 types, external and internal. Only external ones are exposed on internet

External API's are secured with SP with cert based authentication





Internal API's are not available from internet and use Service Principals with secrets stored in Azure Key Vault

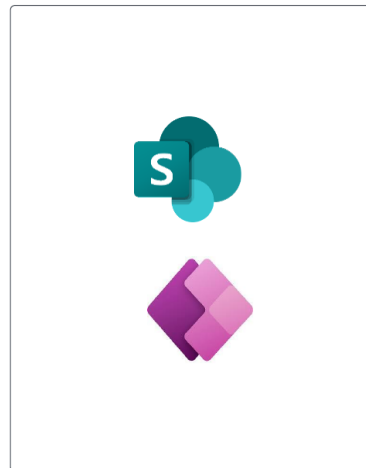


Security & Permissions

- All normal users from oil companies are guest users in L2S tenant.
- Added content is protected and can't be modified.
- Workspaces (JV, AMI etc)
 - Office 365 – Each Workspace has their own M365-groups incl Teams and Site (Site Collection)
 - Power Platform – Each Workspace has their own sets of Access Teams protecting content
- Users will have READ or WRITE permissions.
- To protect added content; we give users only READ in SP, and add data only through Power Apps / Azure Functions.

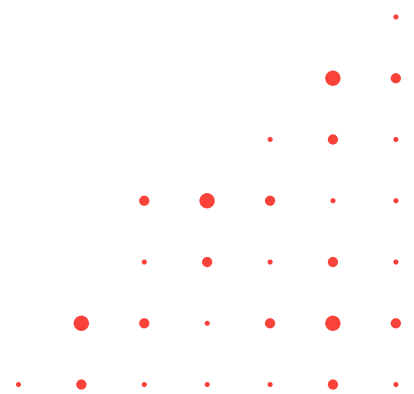
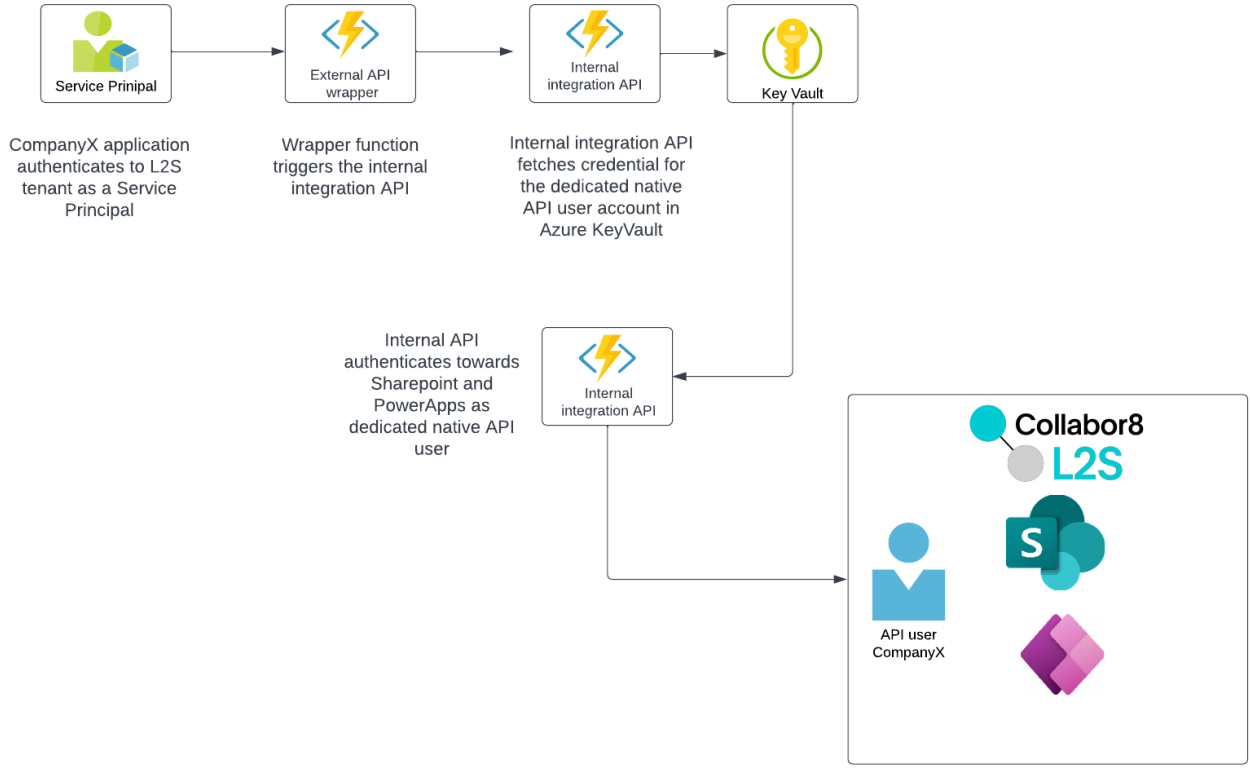
Authentication

<p>Authentication: Service Principal with certificate</p>	<p>Authentication: Standard native user in L2S, no MFA. Can only authenticate from the External API wrapper (limited by NAT IP of the wrapper)</p>
<p>Authorization (permissions): Sign-in (no extra roles/permissions)</p>	<p>Authorization (permissions): As a standard L2S user, with permissions scoped to all sites/workplaces specific to a company</p>
 <p>External API Service Principal</p>	 <p>External API wrapper Function</p>
<p>Type of security context the function execute in:</p>  <p>Service Principal</p>	 <p>Standard user</p>
<p>Network inbound: Exposed to internet</p> <p>Network outbound: Static NAT IP for outbound traffic</p>	<p>Network inbound: Not exposed to internet Traffic only allowed from External API wrapper</p> <p>Network outbound: Static NAT IP for outbound traffic</p>



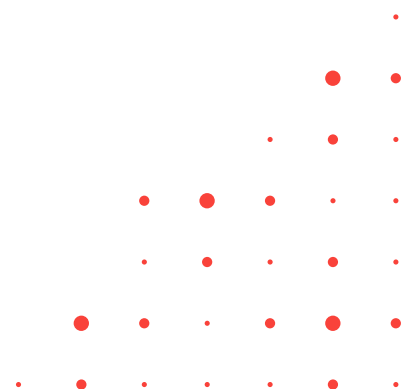
Integration API executes as a standard user scoped to a specific company

Authentication

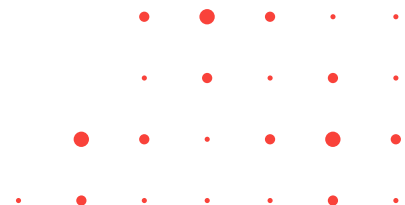
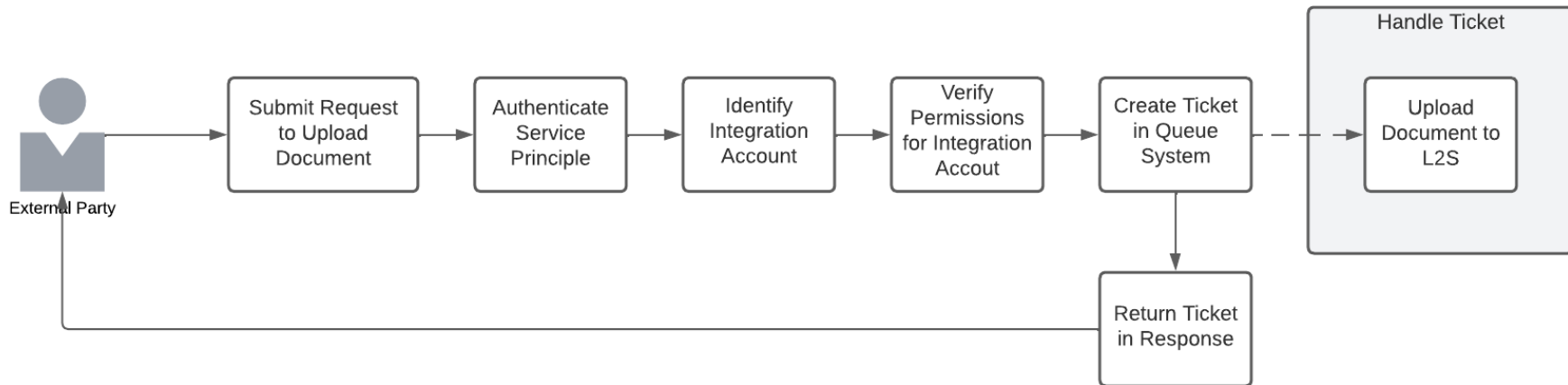


General principal of L2S API

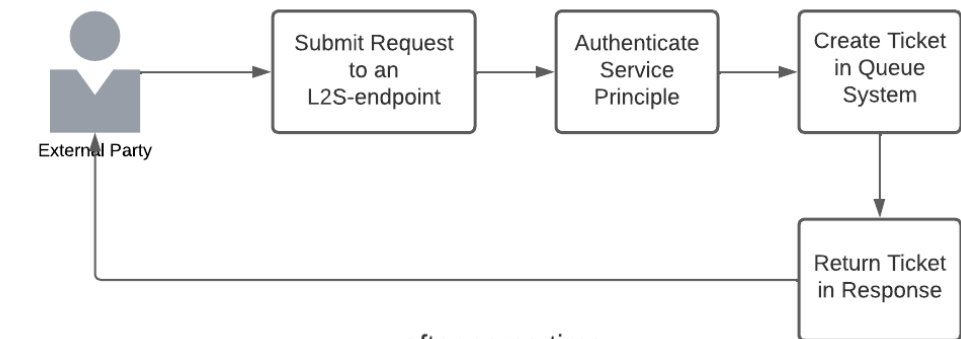
- Microsoft SaaS (O365 + Dataverse) services has throttling.
- L2S API will handle throttling by implementing a ticketing system.
- L2S API could increase number of App Registrations to increase number of requests to SaaS services.



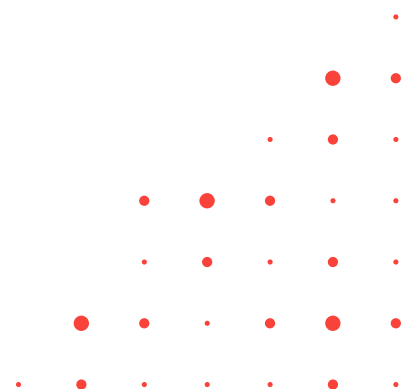
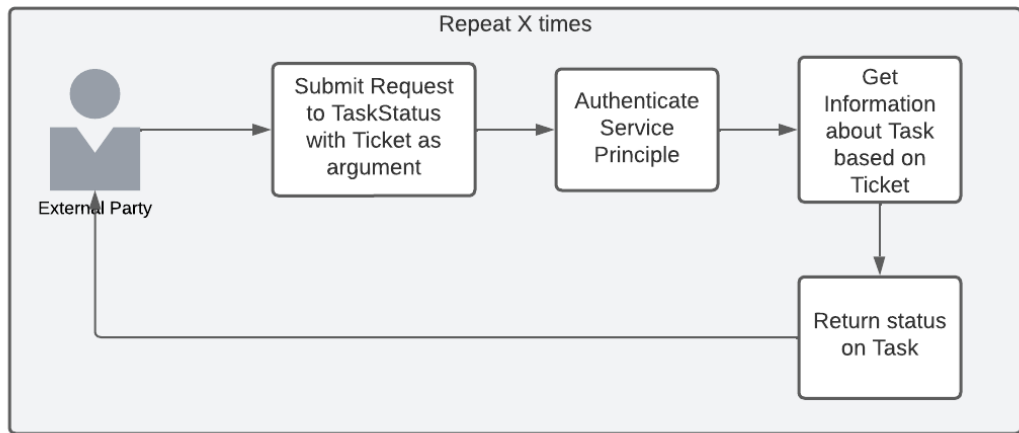
General principal of L2S API



General principal of L2S API

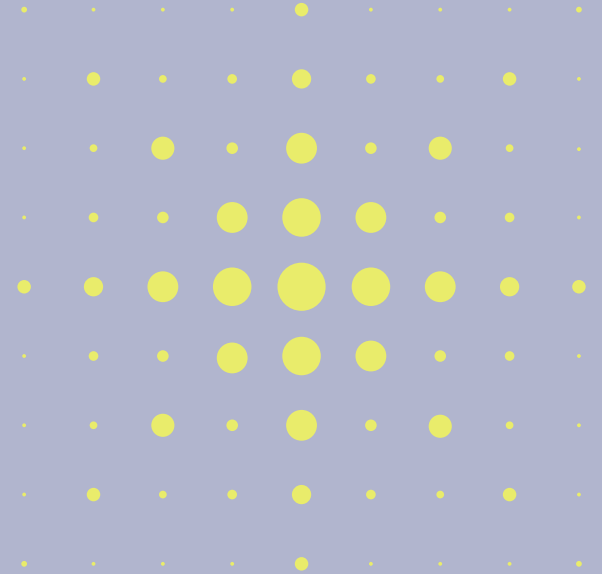


after some time...



Next steps

- Technical details
- Service Principal and certificate



Integration authentication details

Hi

New Integration API registered in Collabor8 L2S

Customer information

Company:

Organization Number:

Mobile Contact:

Email Contact:

Sender information

Email Contact: servicedesk@cegal.com

Authorization Endpoint

Azure Tenant Id:

Azure Domain: l2stest.onmicrosoft.com

L2S Environment: Test

Client application credentials

Client Name:

Client Id:

Certificate application credentials

Personal Exchange File:

Personal Exchange Password:

Certificate Validity Date: 2022-06-19 21:37:21

Certificate Expiry Date: 2023-06-19 21:37:21

API information

API Host Url: <https://apis-test-l2s.collabor8.no>

API Document Url:

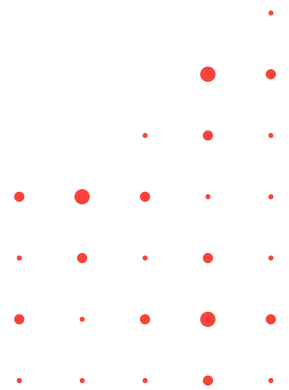


Certificate file (pfx)

Development Status

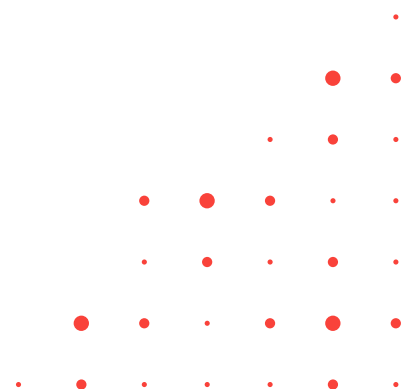
3.1 Development Status

Operation	URL	Development Status
Request ticket status	GET /api/RequestStatus/{unique-ticket-guid}	Completed
CC&B – Upload CC-document	POST: /api/CashCalls/{JointVentureName}/{year}/{month}/{fileName}	Completed
CC&B – Upload B-document	POST: /api/Billings/{JointVentureName}/{year}/{month}/{fileName}	Completed
CC&B – Download CC-document	GET /api/CashCalls/{JointVentureName}/{year}/{month?}	In progress
CC&B – Download B-document	GET /api/Billings/{JointVentureName}/{year}/{month?}	In progress
Upload document	POST: /api/UploadDocument	In progress
Update document metadata		Not started
Upload PDF rendition		Not started
Create folder		Not started
Get document	POST: /api/GetDocumentComments	Completed

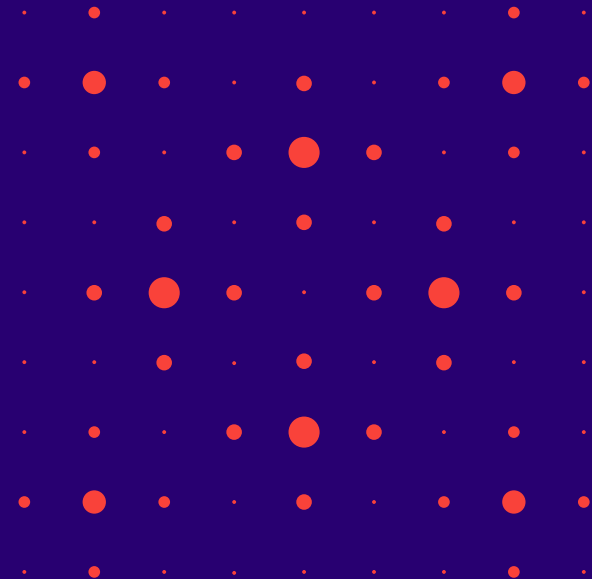


Q&A

- How to access documentation?
- Can we reuse existing integration credentials? How to obtain new?
- How to assign access to integration account?



Questions





Thank you