



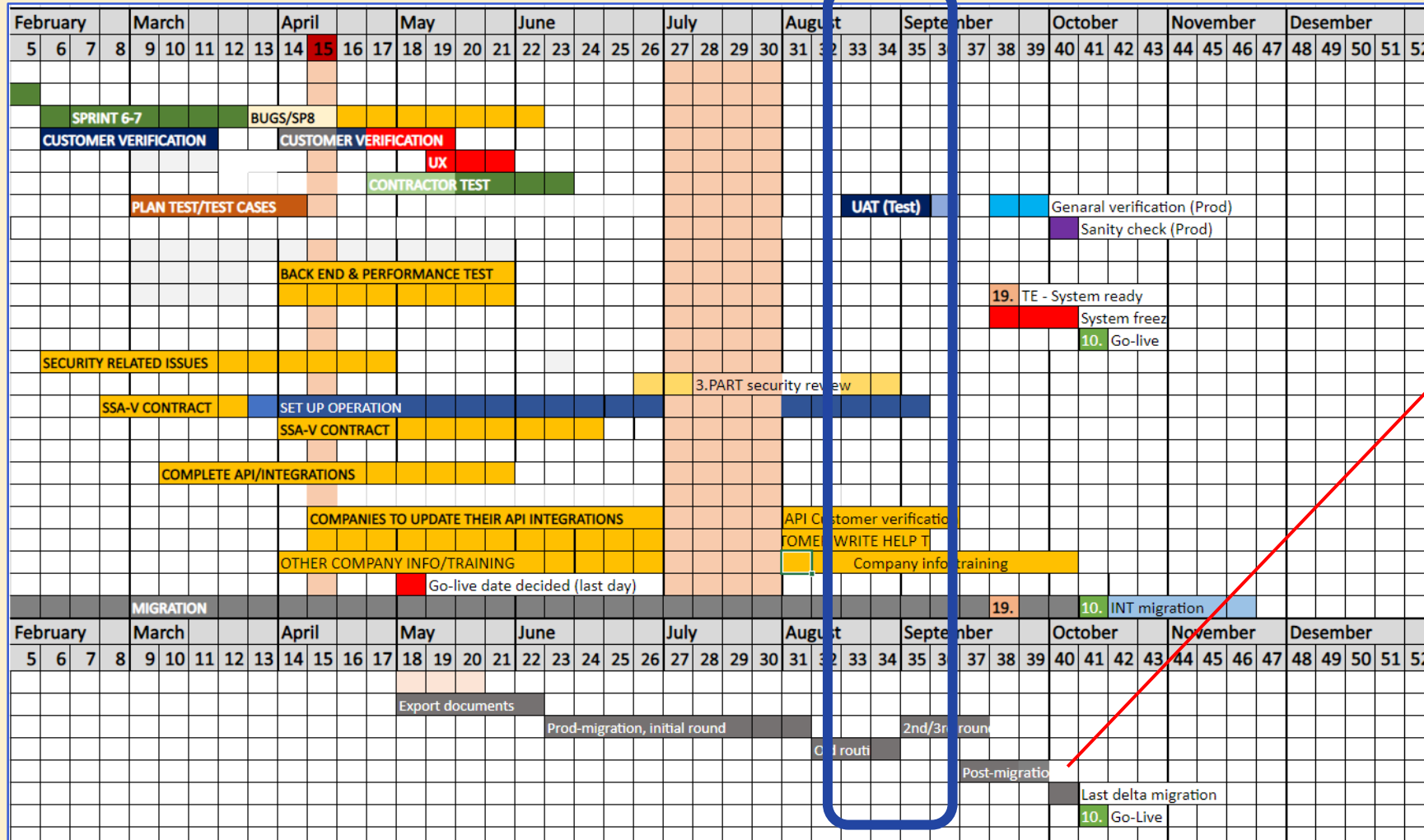
OFFSHORE NORGE

L2S IS CHANGING TECHNOLOGY PLATFORM



- New L2S is built on Microsoft 365:
 - Sharepoint and Teams user interface with added L2S functionality in power apps
- All data and end users will be migrated from existing solution to new solution
- Updated APIs for integration
- New authentication method: Azure AD

PROJECT STATUS AND PLAN



Some data will be migrated after go live:

- Automatic PDF renditions
- Audit logs (system logs)
- Authority Communication routings (Documentation will be available in folders)

RELEASE DATE INFORMATION



- **New service will go live Monday 10th October at 08:00**, existing system will be unavailable from Thursday 6th October at 17:00.
- First release will contain **enough functionality to replace the old system**, improvements will be added continuously after go-live.

HOW TO GET ACCESS TO NEW L2S END USERS



- The new service will be available from 10th October.
 - **Link to new system will be made available to all users in the morning.**
 - **Old system link will also redirect to new system.**
- You log in using your Azure ad-login (the same log in name and password that you use on your company pc)
- Access rights will be transferred from existing L2S service
 - Inbox messages from old L2S service may not be available immediately, but they will appear shortly after go-live.

HOW TO ACCESS NEW L2S MACHINE USERS (M2M/API USERS)



M2M accounts (Machine users) will NOT be migrated to new solution.

The process for gaining access is:

1. Request new M2M account(s) by filling in order form. The companies should request a separate M2M account for cash call and billing. Link to order forms:
<https://forms.office.com/pages/responsepage.aspx?id=CXAvajUohkeIUyxaXWN9E8sQAz9XK3dBI0UgLGhQYgIURFAXQIk5REtXMIJEM1FEUDkwUEtWRVISUSQIQCN0PWcu>
2. Once the account(s) has been set up, the L2S company administrator or superusers need to grant JV access(es) to M2M accounts(s). NOTE there will be a **new naming standard** for all M2M-accounts, ie Integration System Account Equinor M2M1
3. API documentation will be made available via L2S and <https://collabor8.no/services/l2s/>

TRAINING



The following training dates have been scheduled:

- Authority Communication
 - 26th Sep 12:00-13:00
 - 28th Sep 12:00-13:00
- L2S
 - 26th Sep 14:00-16:00
 - 28th Sep 09:00-11:00
- All registered superusers have been invited to these training sessions.

- All training sessions will start with a pre-recorded demo followed by a Q&A session.
- The pre-recorded demos can also be watched online at your own convenience.
- There will also be tooltips and help documentation inside L2S to guide the endusers through the different functionalities.

SUPPORT



- New L2S Servicedesk from October 10th : support.L2S@collabor8.no

QUESTIONS/FEEDBACK



Please contact :

Camilla Lorentzen, L2S Service Responsible, Offshore Norge

Camilla.lorentzen@offshorenorge.no